



In order to protect customers and employees from COVID-19, we have implemented following proactive precautionary measures.

■Arrival

Mask wearing

Please wear a mask when entering hotel.



Hand disinfection

Hand sanitizer is now available throughout the hotel. We highly recommend proper hand sanitization.



■Check-in

Reception desk

Acrylic shields are set up at the reception desk, and all staff wear masks.



Check-in

Fill out a health questionnaire. Tray is used during payment transactions.



■Restaurant

Temperature measurement

Temperature will be measured at the restaurant's entrance. (Please note that we do not allow customers with temperature of over 37.5 degrees to enter.) Cashier staff will use tray during payment transactions.



Masks and gloves wearing

All staff will wear masks and gloves.



In Response to the COVID-19



KYOTO YAMASHINA
HOTEL SANRAKU

■ Measures taken by staff

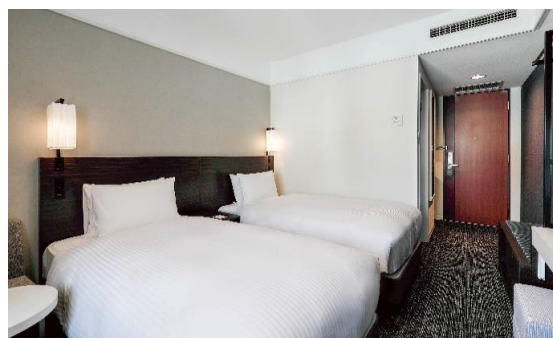
Mask wearing and hand washing and sanitizing

The staff wear masks, often wash and sanitize their hands.



Rooms

For sanitary considerations, we will keep each room vacant for at least three days after check-out.



Spa & Sauna for ladies (only for guests)

This facility is closed until further notice.



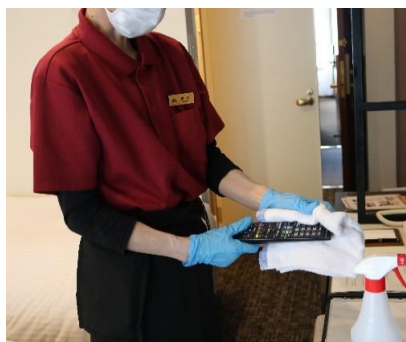
Arrangement of tables

We will arrange sufficient space between tables



Cleaning and disinfection

In addition to conventional cleaning, we thoroughly disinfect objects, such as remote controls and door knobs in the guest rooms, tables and chairs at the restaurant etc. Also, hot water sterilization of tableware and cutlery at the restaurant (more than 80 degrees).
※Please note that we will not provide room cleaning during your stay as part of our measures to prevent the spread of COVID-19. We will provide towels and amenities for the number of nights the guest is expected to stay in advance. We apologize for any inconvenience and hope for your understanding.



All staff will do their best to ensure safe stay.
Thank you for your understanding and cooperation.